

Make It Creation Space

# EPSON EDGE SOFTWARE GUIDE

Epson 24" SureColor F570 Pro  
Sublimation Printer

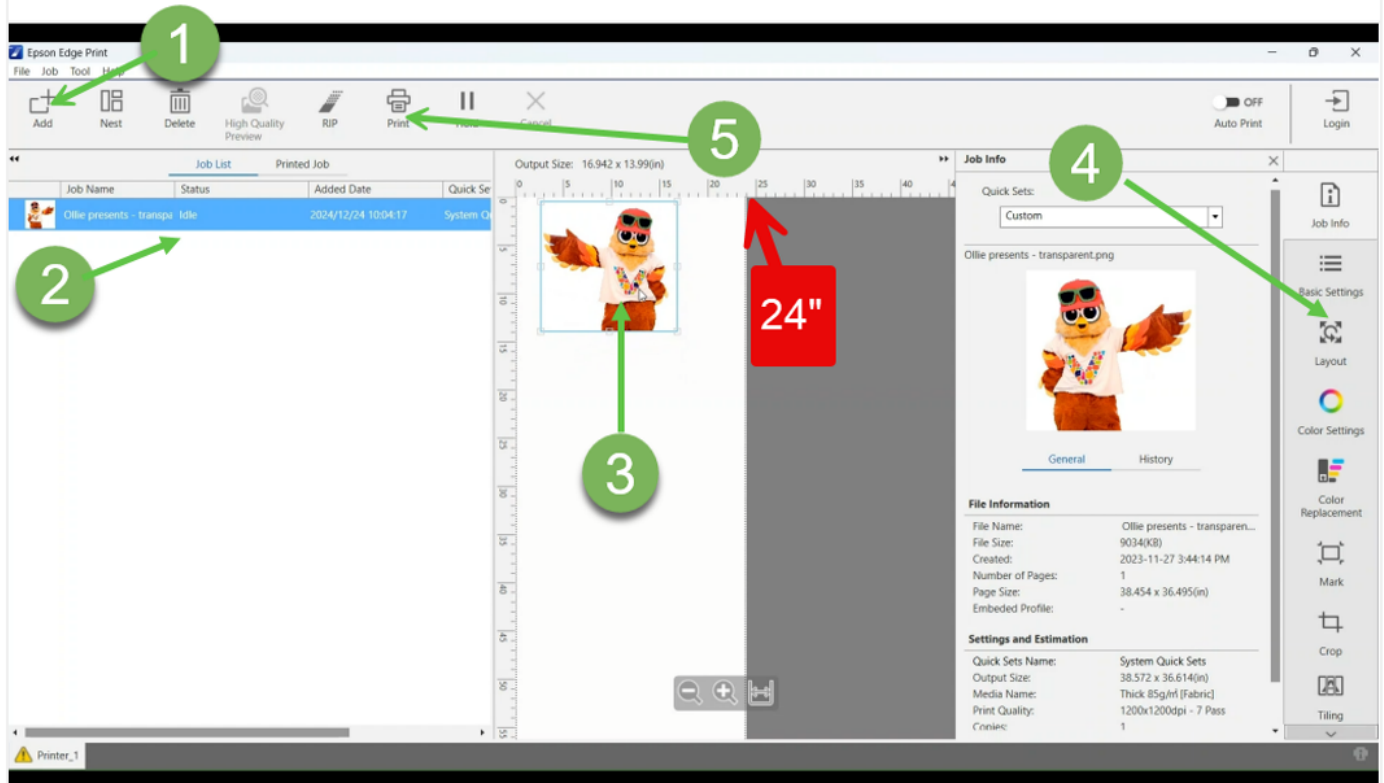


VPL/PBRL

January  
2025

# How To Use Sublimation Printer

## A General Look



1 Click "Add" to bring files or drag and drop them to the 2nd section.

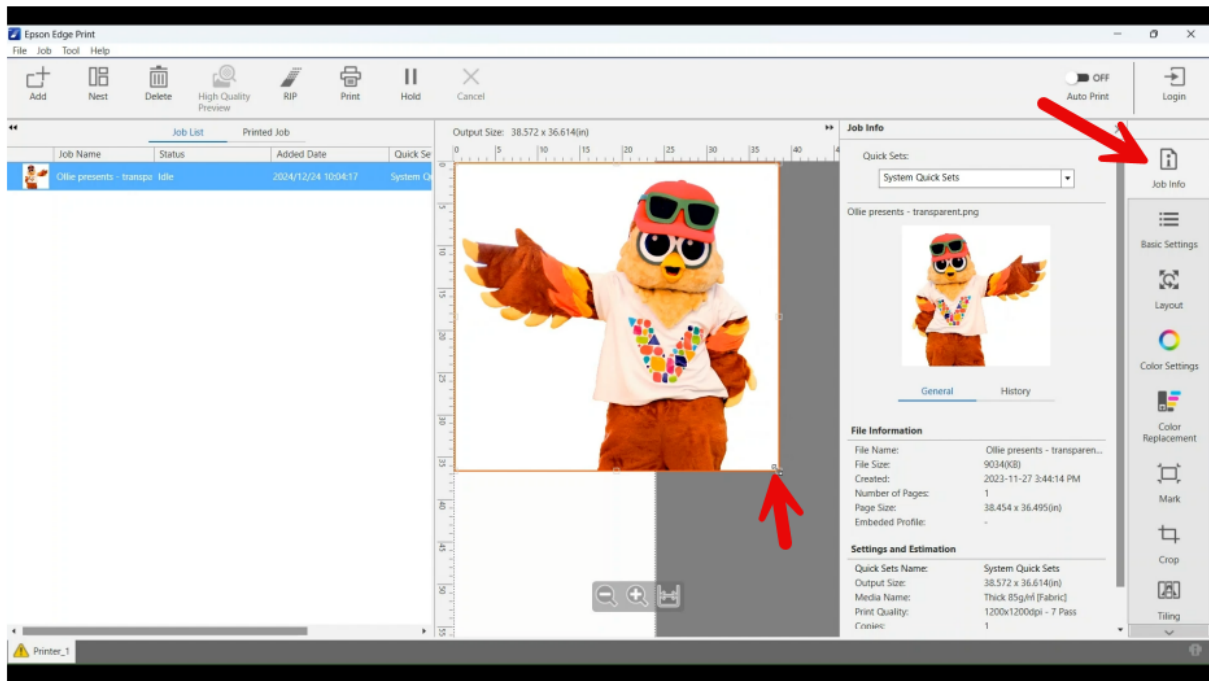
2 You can select the files you want to print.

3 This is the printing area. As you see we use a 24" roll paper so the width of the area is 24". You can bring more than one image here.

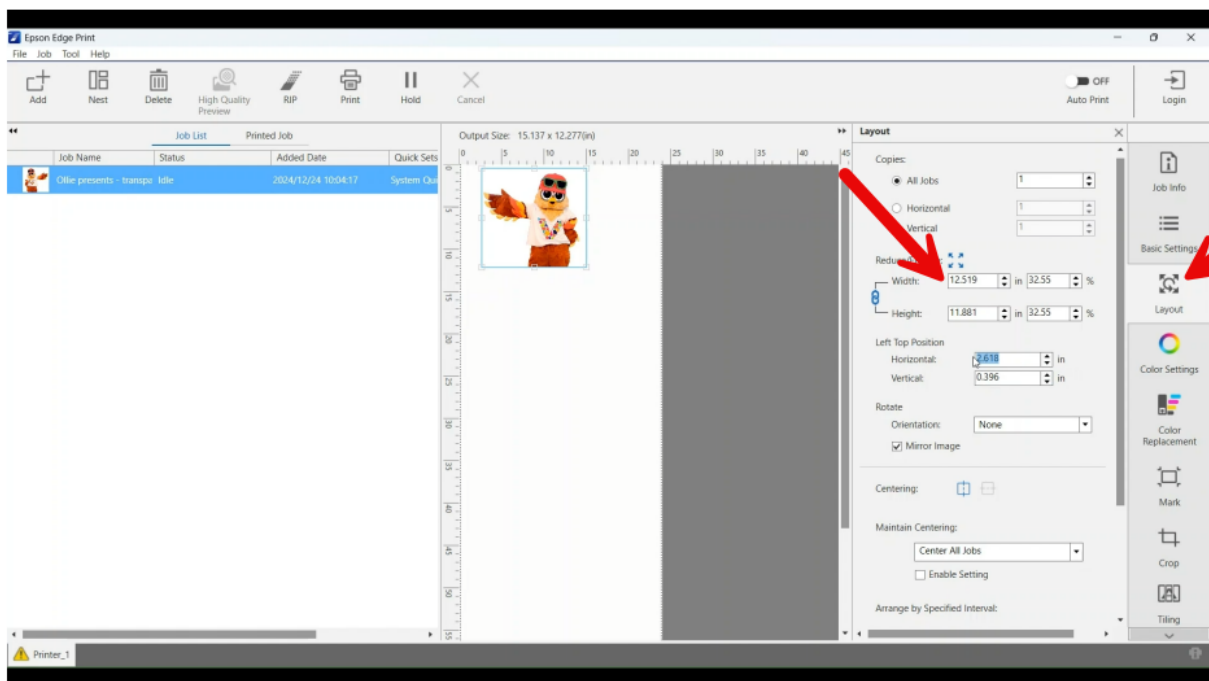
4 In this section, we have access to different feature for customizing our images. We will cover them in the next pages.

5 When the images are ready, we can RIP or/and PRINT them. RIP prepares the file but don't send them to the printer.

# Resizing the Image

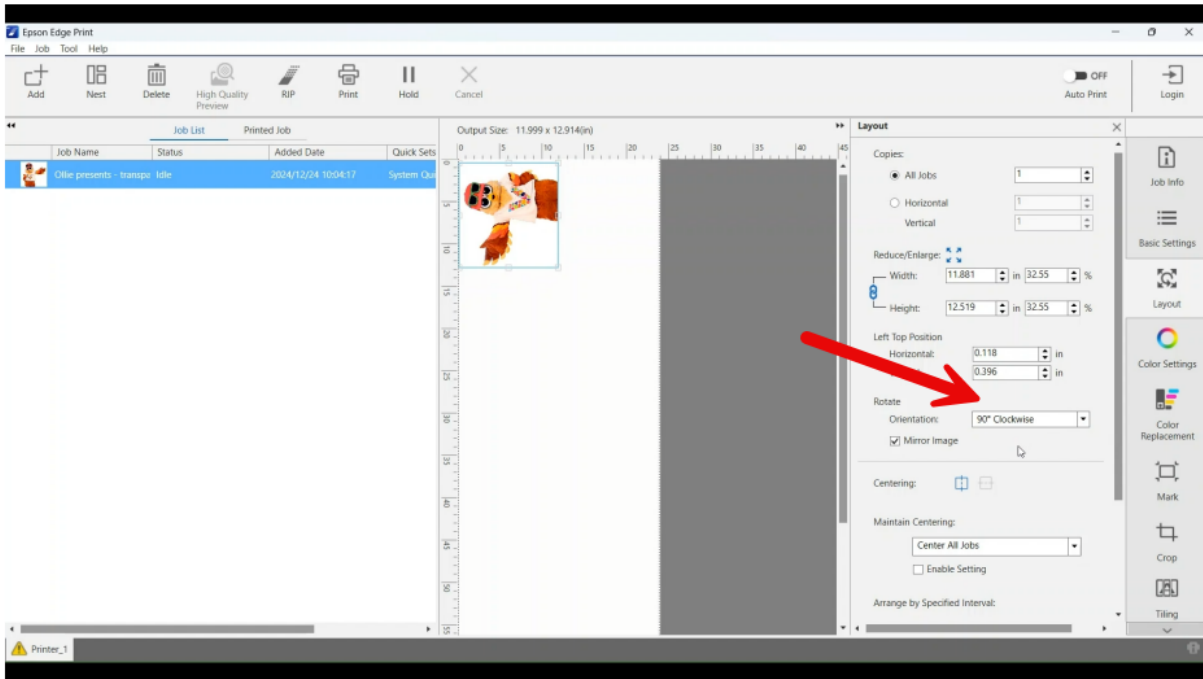


**A** Job Info shows the original size. Use the corners to resize the image

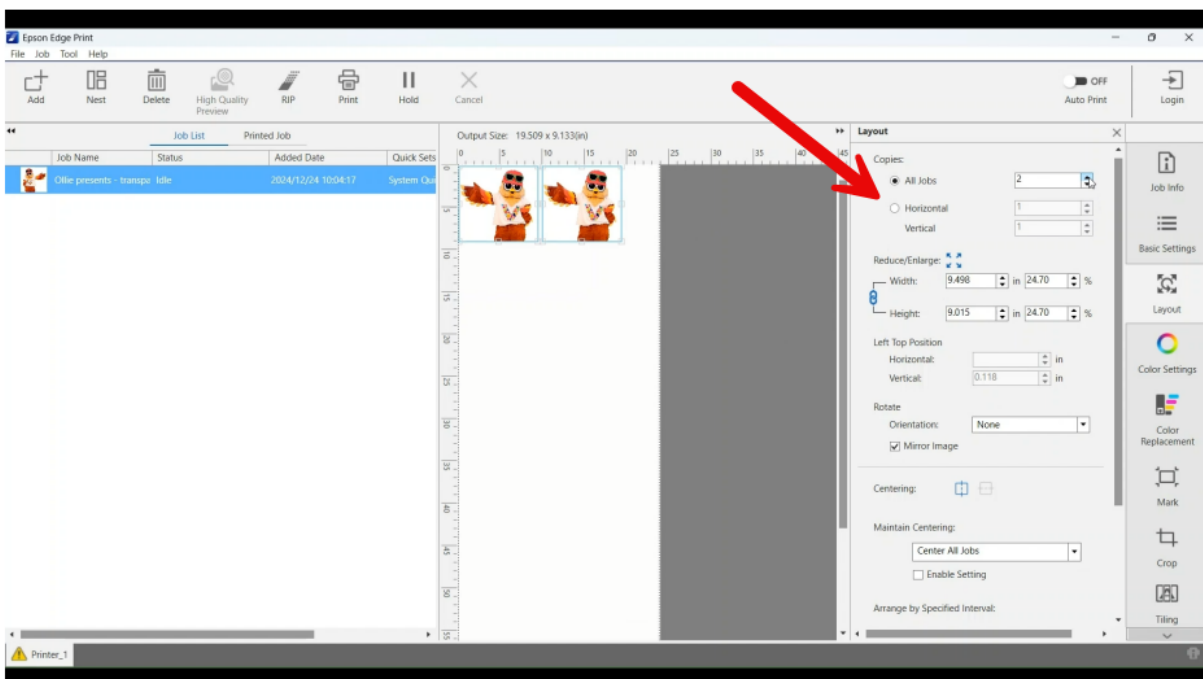


**B** Or under Layout, manually change the dimensions (or percentage.)

# Rotating and Duplicating

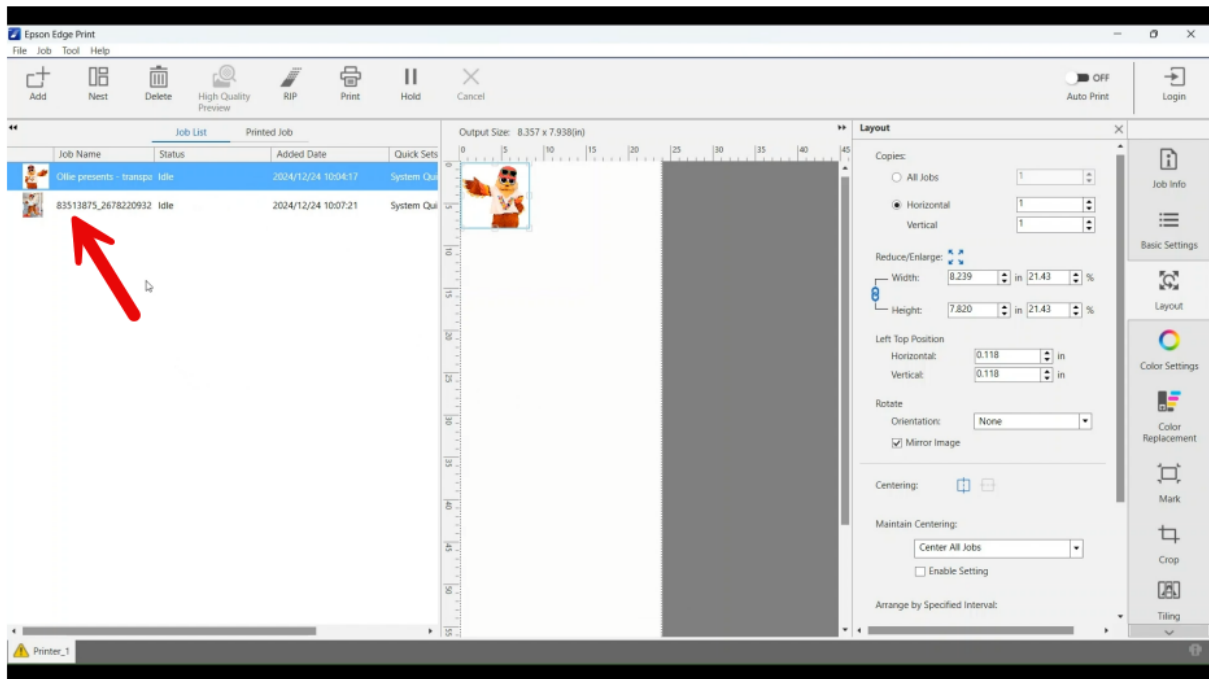


**A** Rotate your image under Rotate options in 90 or 180 degrees.

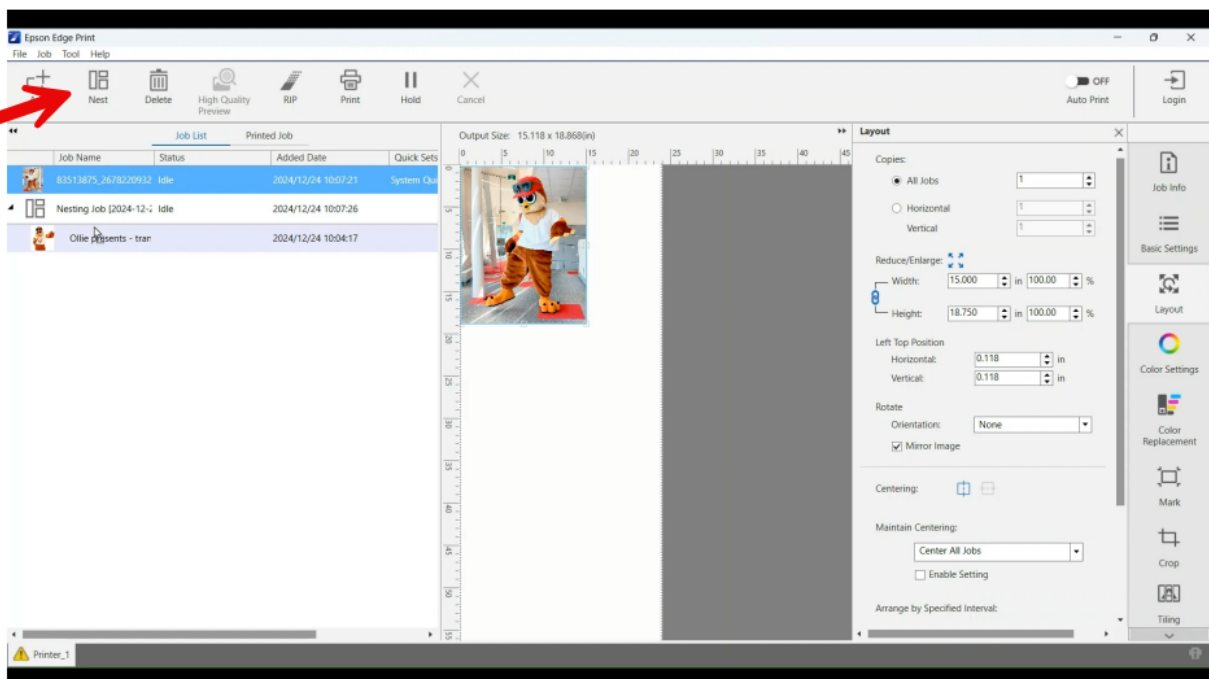


**B** Make as many as copies you'd like. Copies can be made in total or only on Horizontal/Vertical lines.

# Printing Multiple Images

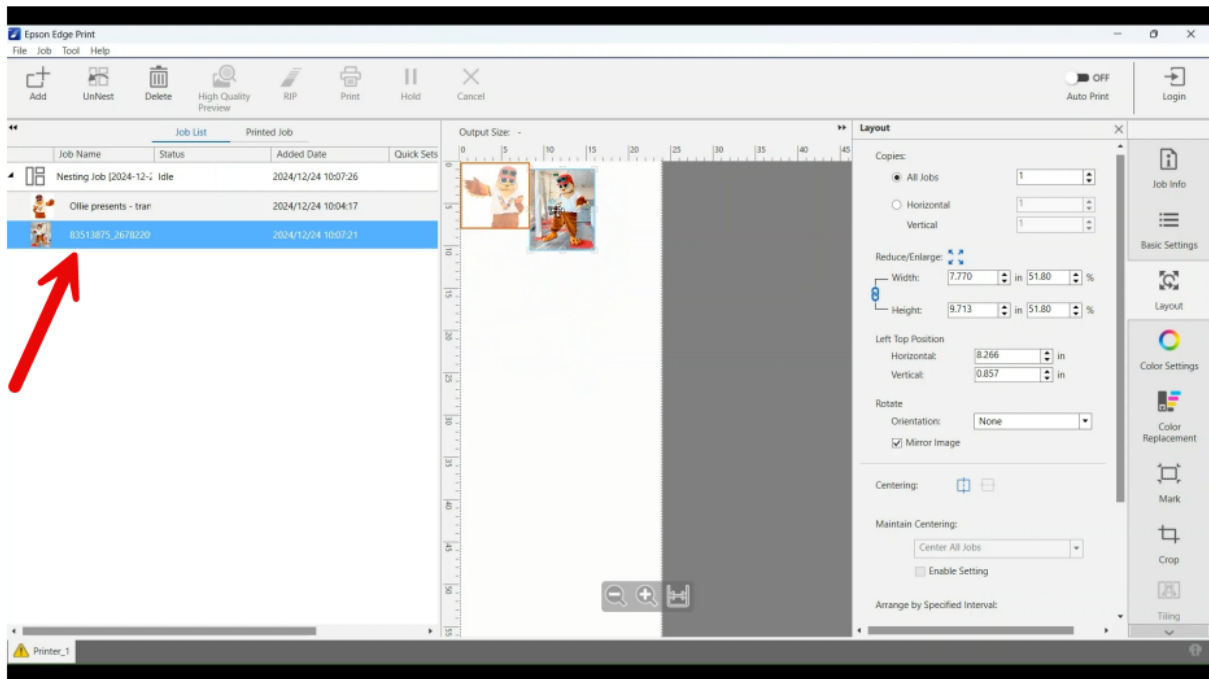


**A** Add more than one image to the software.

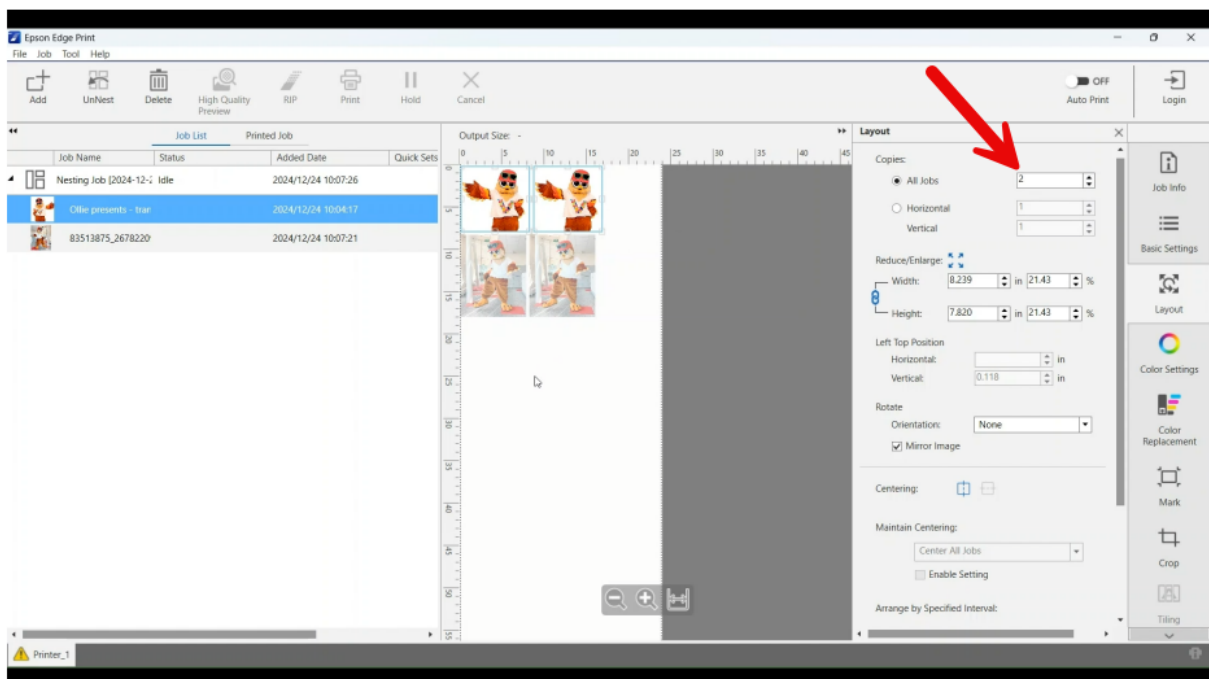


**B** After selecting one image, Click on Nest on the menu. Then select the 2nd image

# Printing Multiple Images (Con.)



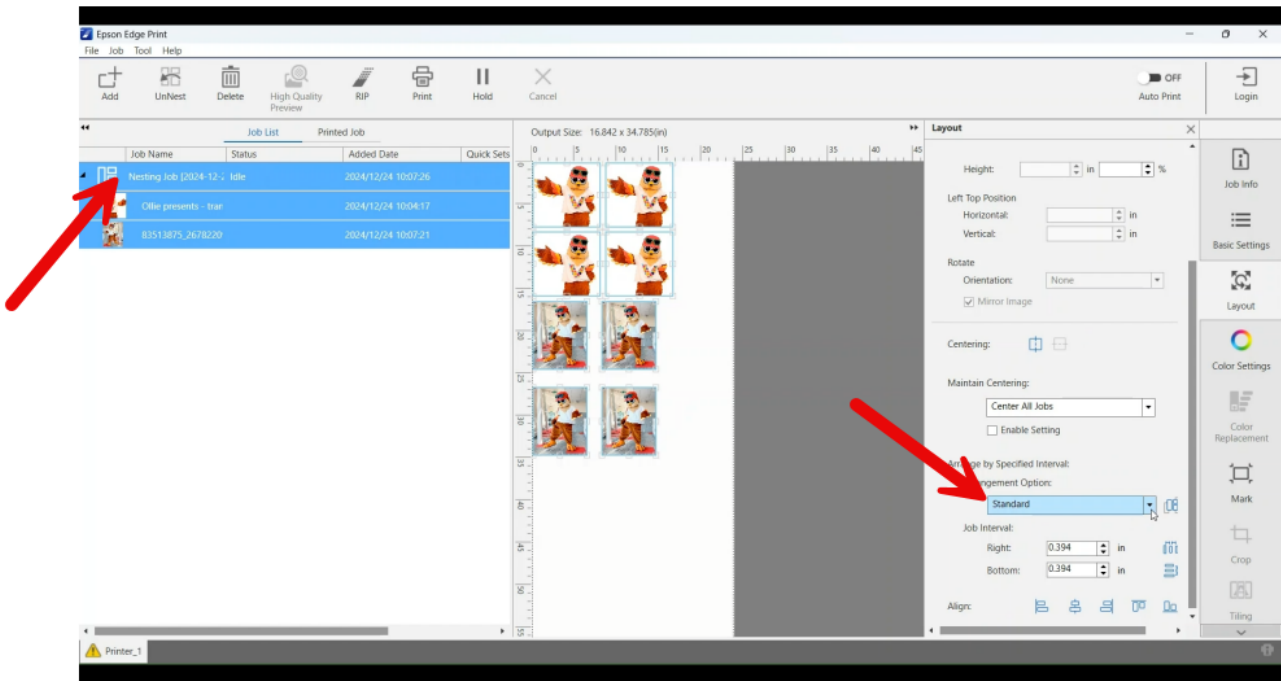
**C** Drag the 2nd image and drop it inside the Nest folder



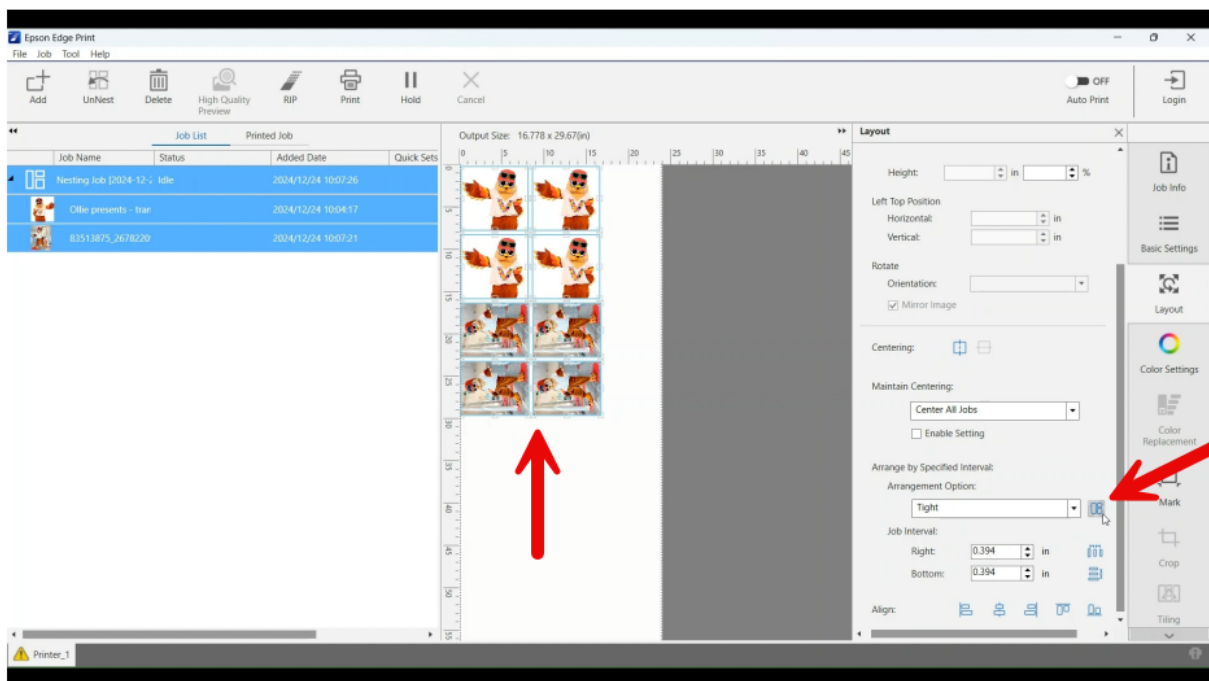
**D** Now you can resize and copy the images inside the nesting folder



# Preparing For Printing - Saving Paper

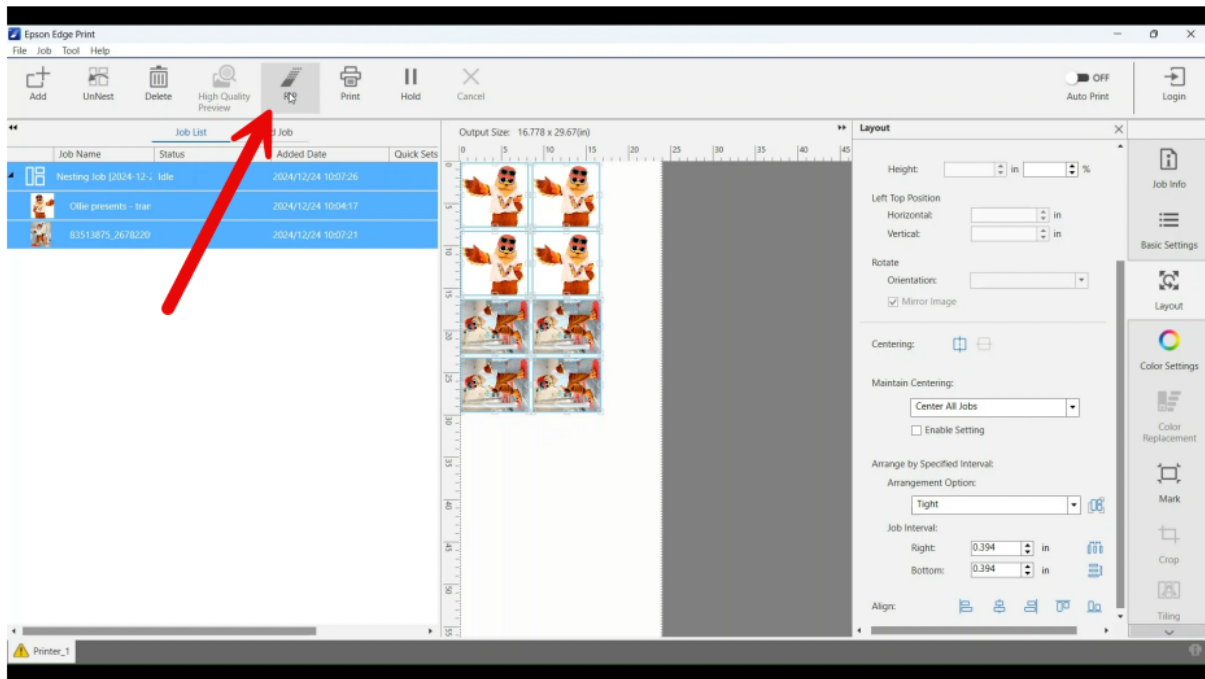


**A** After finishing all adjustments, Click on Nest Folder, then change Arrangement options from Standard to Tight.

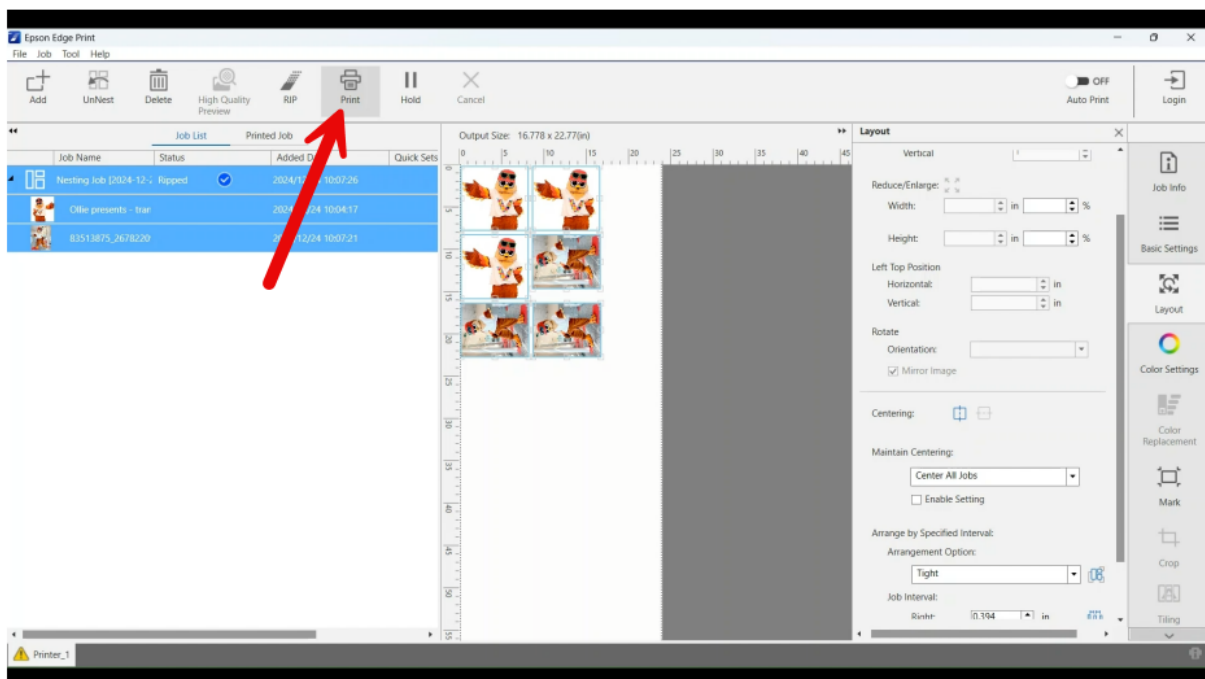


**B** Then confirm the change. The software automatically rearrange the shapes to save the paper.

# Sending Jobs to the Printer



**A** When your pictures are ready, Click on RIP. The software makes images for printing. You can RIP several jobs without sending them for printing!



**B** You can print your jobs when they are ready. If you haven't RIP them before, the software will do it automatically. It's possible to Hold or Cancel a job.

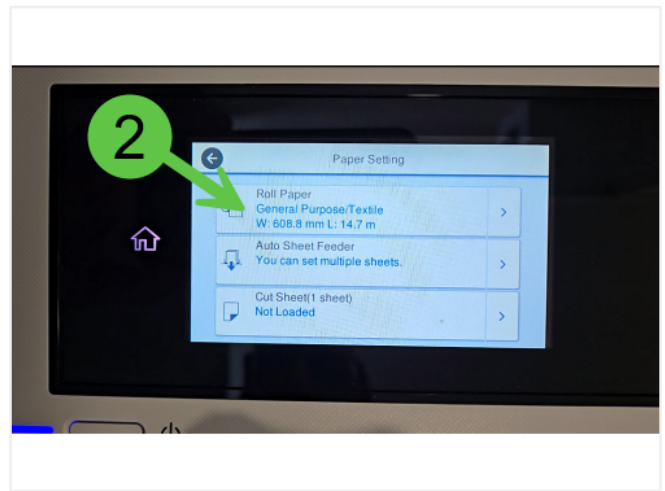


# Cutting the Paper

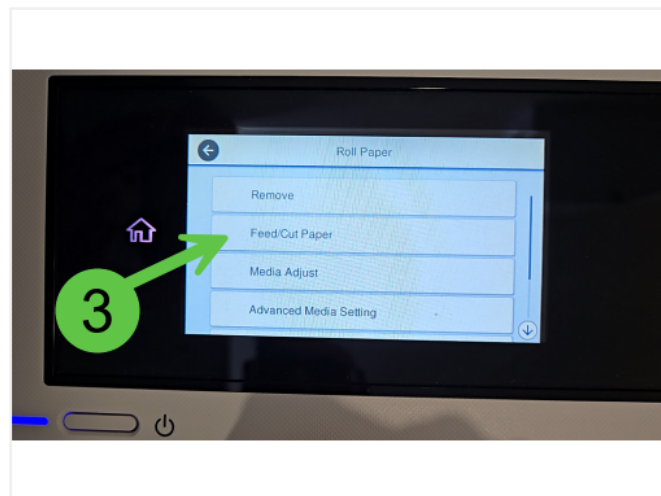
*Directly on the Printer*



**1** On the Epson control panel, Touch Paper Setting.



**2** Select Roll Paper



**3** Select Feed/Cut Paper



**4** Select Cut